



BIANCHI ÍLIOS





BIANCHI

SIDI ABDEL RAHMAN

A BLAST FROM THE PAST: BIANCHI SIDI ABDELRAHMAN, SUMMER REBORN:

A-one-of-a-kind community built around exclusivity, reliability, relevance, familiarity, and family-orientation. All brought together to the most wanted blast from the past.

This community complex of 320 units features:

- Apartments
- Chalets (middle floor and first floor with a roof)
- Stand-alone villas

With all the diversified prototypes built, a single human-centric lifestyle arose, offering warmth and security within a harmonized community. Bianchi Sidi Abdel-Rahman, a 5 year-old product built upon 15 years of experience, remains an on-going aspiration.



DEVELOPER X
BY SHOURA

THE MAVERICK MASTERS

A brand that consistently offers unified experiences to anyone who steps foot within their project and a name that withholds all variables needed to evoke model experiences; Developer X.

Developer X projects are divergent in their unique features, defined by three main traits:

- Open spaces in all living aspects
- Inclusion of indoor and outdoor living
- Overemphasis on vegetation and landscaping

From Ourika, Muse, to their arriving summer destination, Developer X projects are where the future plays.





BIANCHI ÍLIOS



PRODUCT OF FUSING CRAFTSMANSHIP:

Ilios, is where the Greek-Mediterranean wholeness shines through:

- **A guaranteed view from all units**
- **Double Beach Experience:**
 - **Main beach front**
 - **Man-made beach front located at the heart of the project**
- **Lagoons**
- **Distinctive Vegetation**



VACATION IN PROXIMITY:

- **30-min drive** from Wadi El Natrun - Al Alamein Road
- **25-min drive** from New Alamein City
- **40-min drive** to El Dabaa road
- **155 Km** from Alexandria
- **276 Km** from Sheikh Zayed, Waslut Dahshour Road

Amwaj

Seashell


BIANCHI
SIDI ABDEL RAHMAN

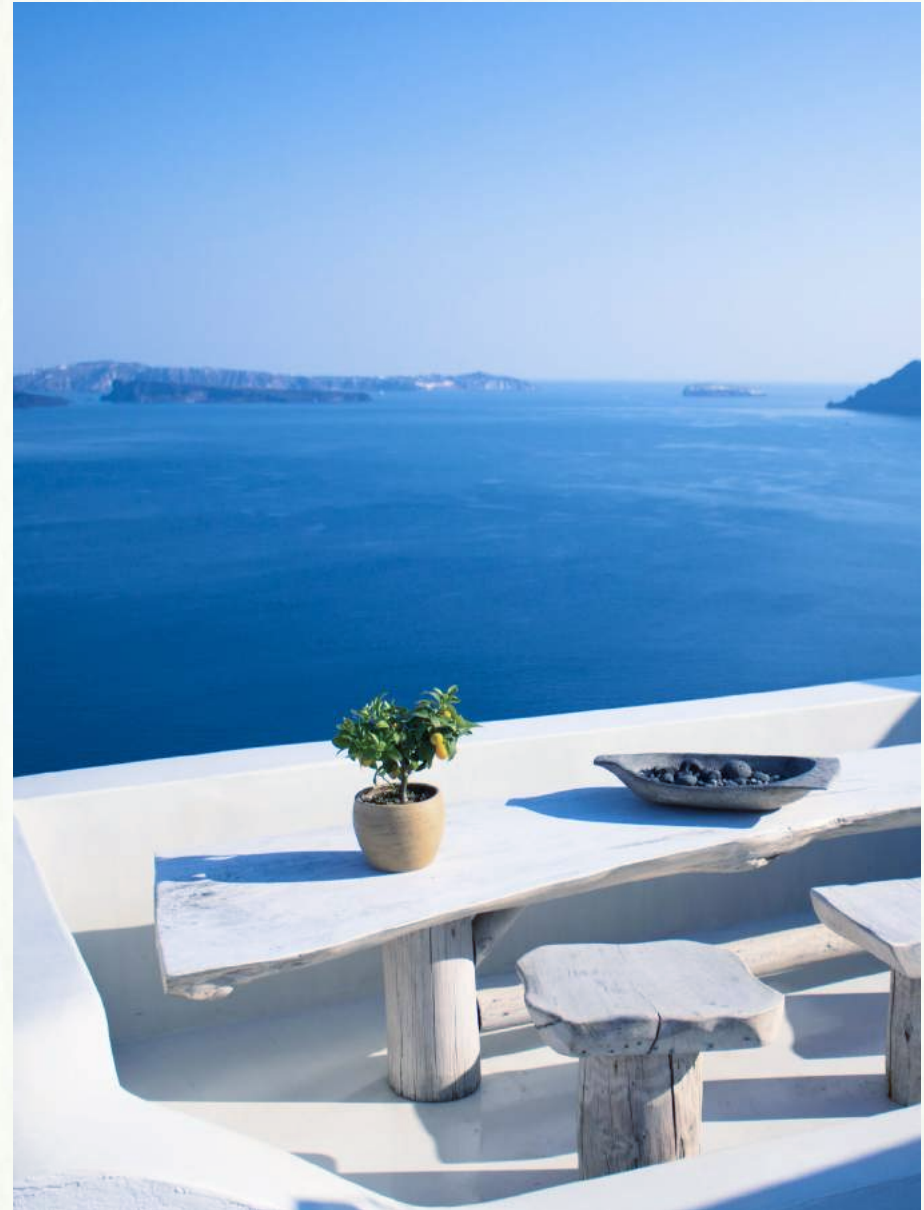

BIANCHI ÍLIOS

Sidi Abd
El-Rahman

BLUE SETTLEMENTS:

A master plan which features:

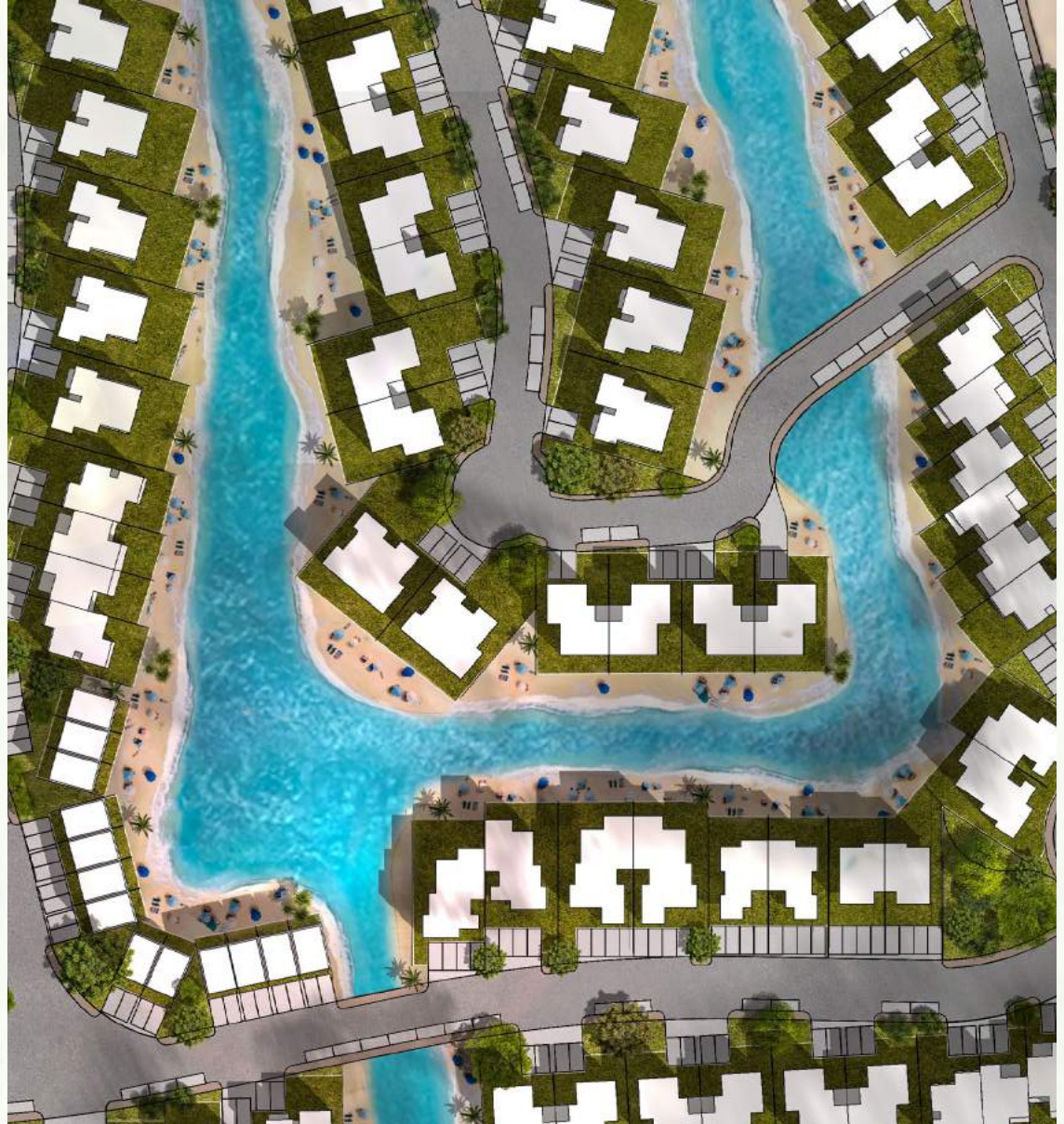
- **A Beachfront view by all units**
- **A water spine**
- **Swimmable lagoons**
- **A wave technology to be enjoyed by surfers & experience seekers**



THE SPINE

The water spine elongates its charm across the land, leaving no settlement untouched. Swimmable lagoons act as the water bodies creating an infinite peninsula of composure and tranquility.

- **4.3 km lagoon beach front**
- **360 meters main beach front**
- **Total lagoons 46,000 sqm (11% of total plot area)**
- **Swimmable lagoons**



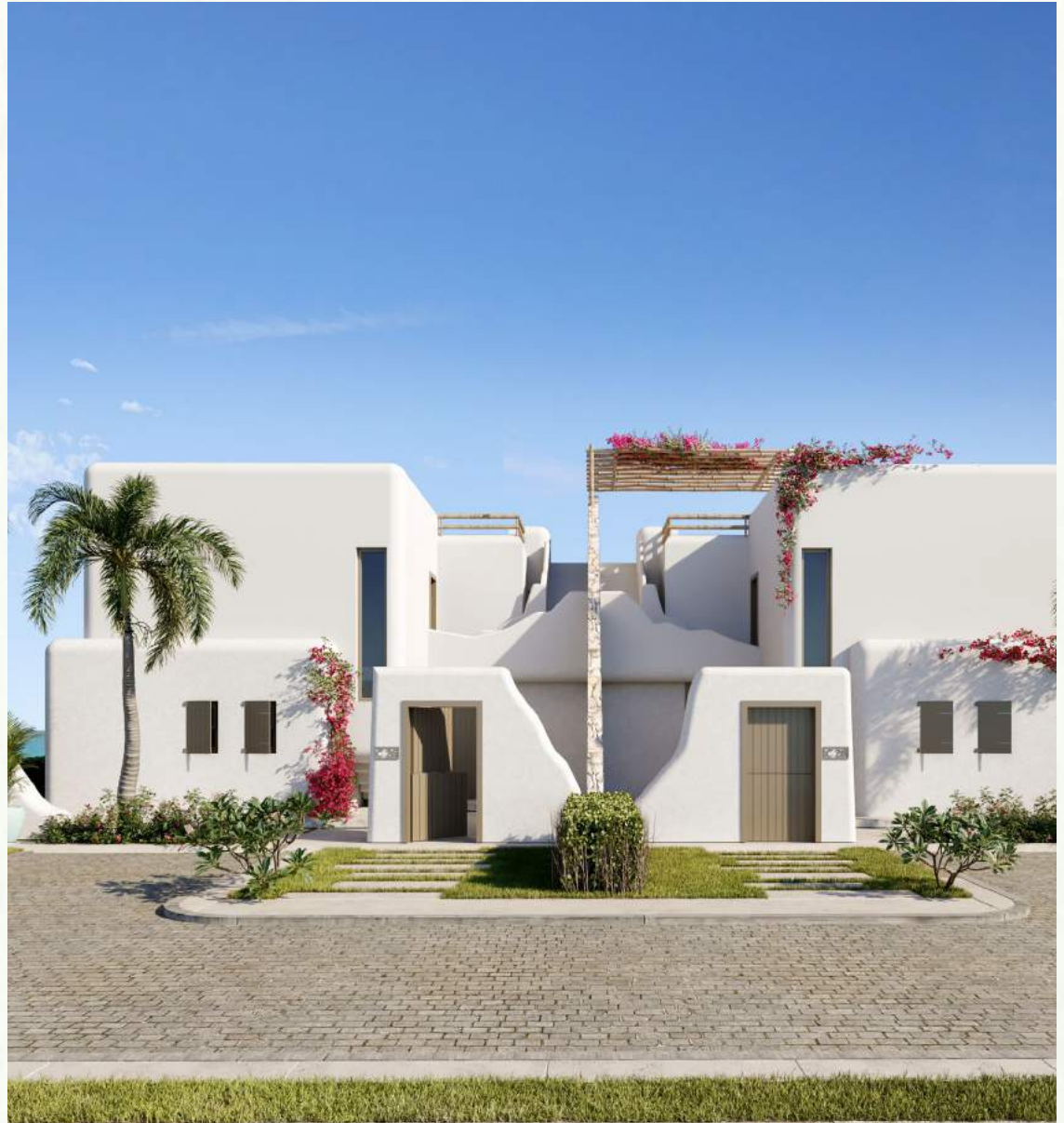
MODERNLY INFUSED AUTHENTICITY

Bianchi Ilios is directly drawn out from current Greek architectural design, focusing on:

- **Modernity**
- **Authenticity**
- **An uplifted vibe**

The project is characterized by a massive land size of over 400,000 meters in which:

- **15% occupied by building spaces**
- **85% occupied by land spaces**
- **Landscaping**
- **Waterscaping**
- **Commercial amenities**



A photograph of a white architectural structure, possibly a wall or a large block, against a dark blue sky. The structure is composed of several rectangular blocks, with a prominent vertical edge on the right side. The lighting is bright, creating strong shadows and highlights on the white surface. The word "MASTERPLAN" is overlaid in white, uppercase, sans-serif font across the bottom portion of the image.

MASTERPLAN

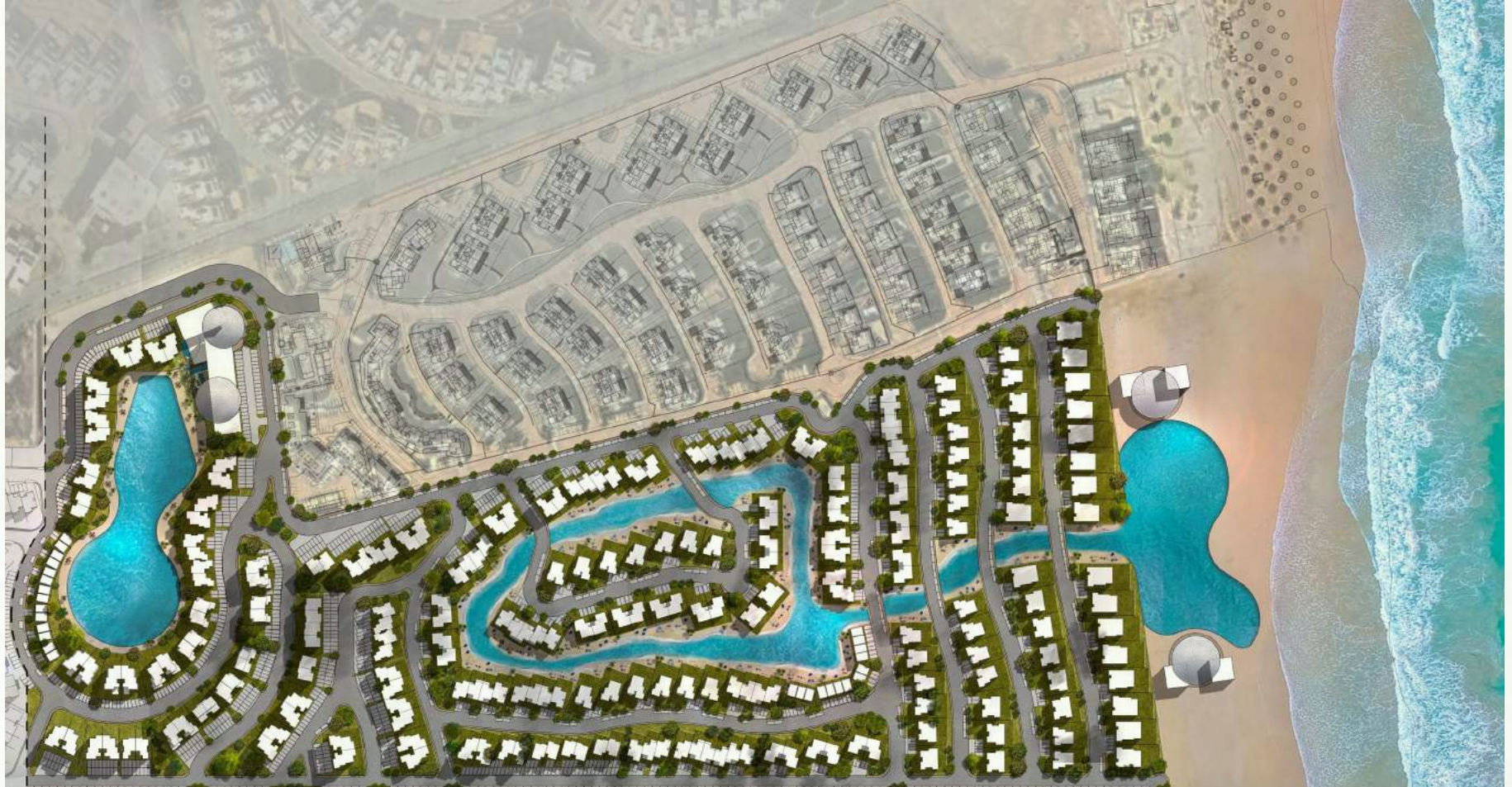
MASTERPLAN





CHAPTER ONE

CHAPTER ONE



V2



DISCLAIMER

All renderings, floorplans, features and specifications are conceptual only and subject to change. All dimensions are approximate and may vary with actual construction. All interior images used are for illustrative purposes only and do not represent the actual features, specifications, fittings, and furnishings.

V2

Total BUA: 320 m²

Average Land Area : 700 m²

Number of Rooms: 6

GROUND FLOOR

Area m ²	127.5
Terrace m ²	34



FIRST

Area m ²	122
Terrace m ²	30



V3



DISCLAIMER

All renderings, floorplans, features and specifications are conceptual only and subject to change. All dimensions are approximate and may vary with actual construction. All interior images used are for illustrative purposes only and do not represent the actual features, specifications, fittings, and furnishings.



DISCLAIMER

All renderings, floorplans, features and specifications are conceptual only and subject to change. All dimensions are approximate and may vary with actual construction. All interior images used are for illustrative purposes only and do not represent the actual features, specifications, fittings, and furnishings.

V3

Total BUA: 255 m²

Average Land Area : 500 m²

Number of Rooms: 5

GROUND FLOOR

Area m ²	127.5
Terrace m ²	34



FIRST

Area m ²	122
Terrace m ²	30



TWIN HOUSE



DISCLAIMER

All renderings, floorplans, features and specifications are conceptual only and subject to change. All dimensions are approximate and may vary with actual construction. All interior images used are for illustrative purposes only and do not represent the actual features, specifications, fittings, and furnishings.



DISCLAIMER

All renderings, floorplans, features and specifications are conceptual only and subject to change. All dimensions are approximate and may vary with actual construction. All interior images used are for illustrative purposes only and do not represent the actual features, specifications, fittings, and furnishings.

TWIN HOUSE

Total BUA: 210 m²

Average Land Area : 350 m²

Number of Rooms: 3

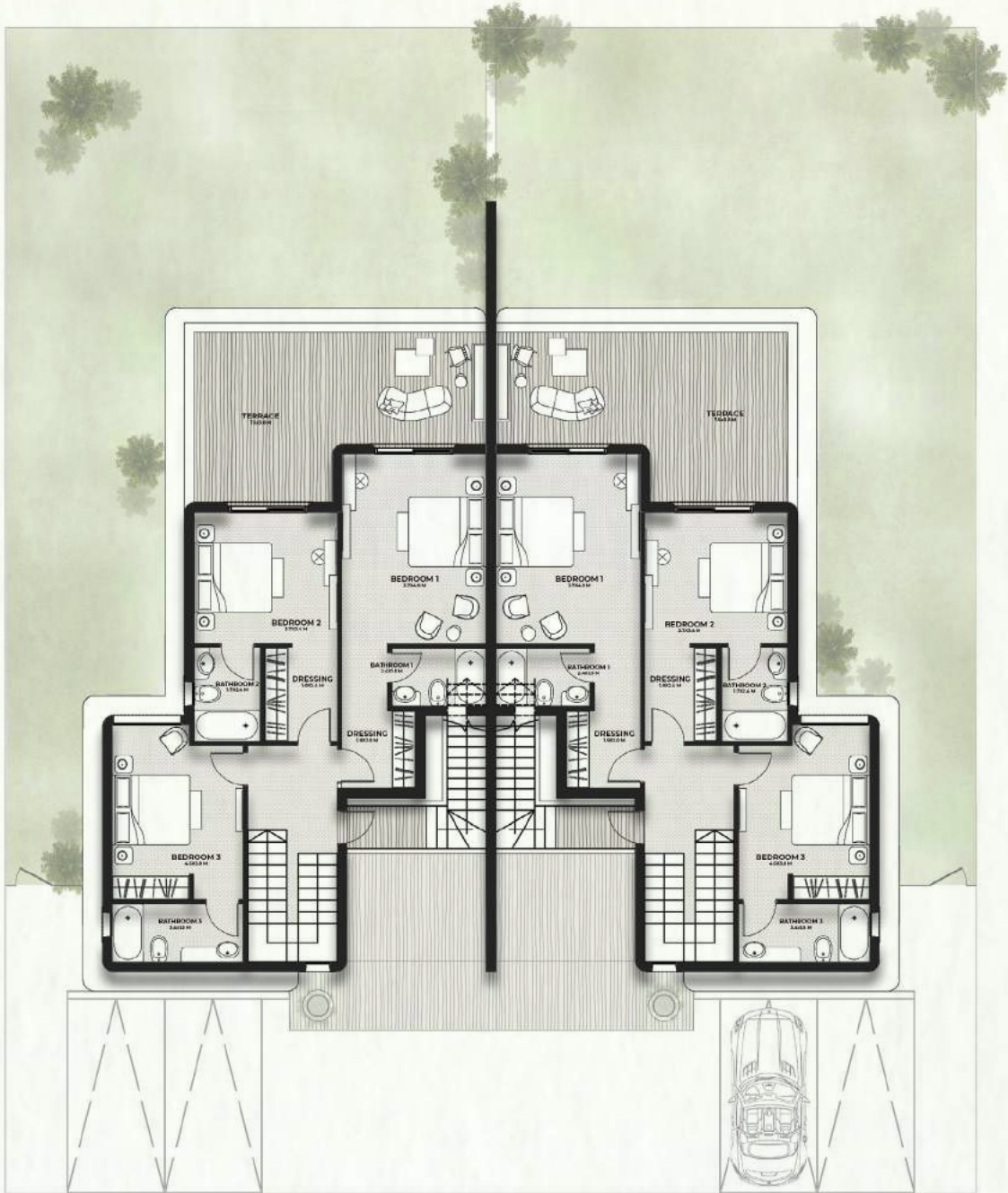
GROUND FLOOR

Area m ²	119
Terrace m ²	29



FIRST

Area m ²	96.5
Terrace m ²	27



TOWN HOUSE



DISCLAIMER

All renderings, floorplans, features and specifications are conceptual only and subject to change. All dimensions are approximate and may vary with actual construction. All interior images used are for illustrative purposes only and do not represent the actual features, specifications, fittings, and furnishings.



DISCLAIMER

All renderings, floorplans, features and specifications are conceptual only and subject to change. All dimensions are approximate and may vary with actual construction. All interior images used are for illustrative purposes only and do not represent the actual features, specifications, fittings, and furnishings.

TOWN HOUSE

Total BUA: 180 m²

Average Land Area : 250 m²

Number of Rooms: 3

GROUND FLOOR

Ground Side

Area m ²	96.5
Terrace m ²	30

Ground Middle

Area m ²	96
Terrace m ²	29



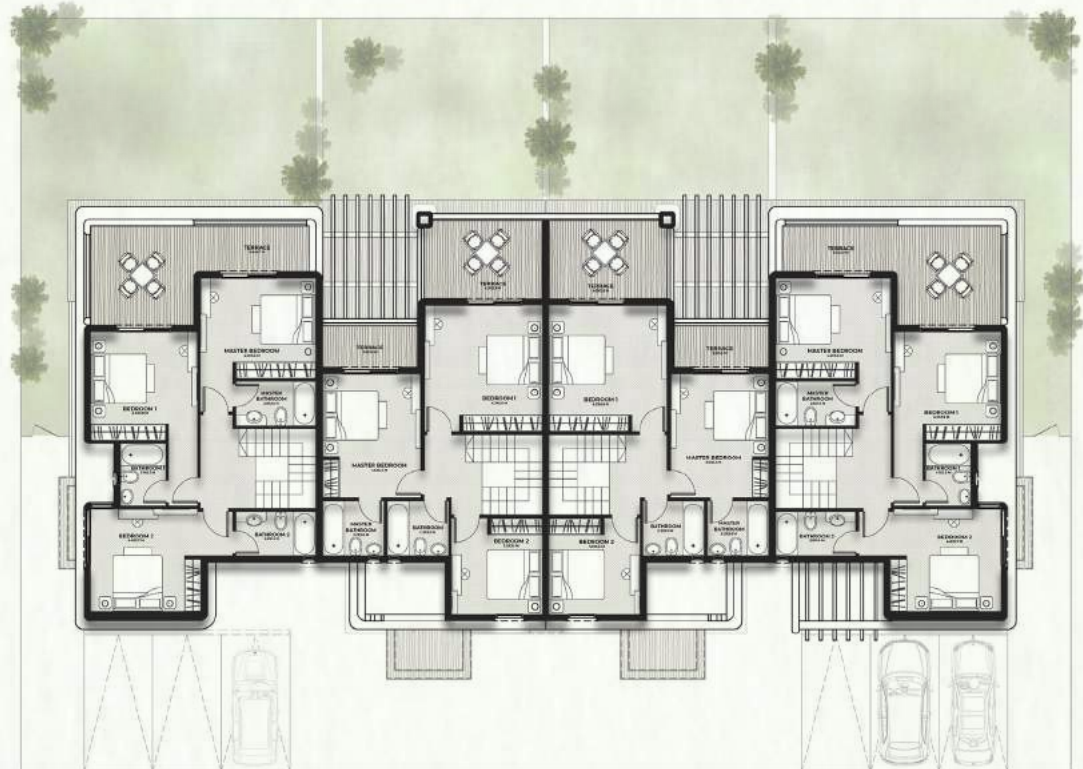
FIRST

First Side

Area m ²	90.5
Terrace m ²	20.5

First Middle

Area m ²	79
Terrace m ²	17.5



4 BEDROOM CHALET



DISCLAIMER

All renderings, floorplans, features and specifications are conceptual only and subject to change. All dimensions are approximate and may vary with actual construction. All interior images used are for illustrative purposes only and do not represent the actual features, specifications, fittings, and furnishings.



DISCLAIMER

All renderings, floorplans, features and specifications are conceptual only and subject to change. All dimensions are approximate and may vary with actual construction. All interior images used are for illustrative purposes only and do not represent the actual features, specifications, fittings, and furnishings.

4 BEDROOMS CHALET

Total BUA: 160 m²

Average Land Area : 300 m²

Number of Rooms: 4

GROUND FLOOR

Area m ²	156
Terrace m ²	32.5



FIRST

Area m ²	156
Terrace m ²	32.5



SECOND

Area m ²	156
Terrace m ²	32.5



3 BEDROOM CHALET



DISCLAIMER

All renderings, floorplans, features and specifications are conceptual only and subject to change. All dimensions are approximate and may vary with actual construction. All interior images used are for illustrative purposes only and do not represent the actual features, specifications, fittings, and furnishings.

3 BEDROOMS CHALET

Total BUA: 130 m²

Average Land Area : 280 m²

Number of Rooms: 3

GROUND FLOOR

Area m ²	127
Terrace m ²	37



FIRST

Area m ²	127
Terrace m ²	37



SECOND

Area m ²	127
Terrace m ²	37



2 BEDROOM CHALET



DISCLAIMER

All renderings, floorplans, features and specifications are conceptual only and subject to change. All dimensions are approximate and may vary with actual construction. All interior images used are for illustrative purposes only and do not represent the actual features, specifications, fittings, and furnishings.

2 BEDROOMS CHALET

Total BUA: 95 m²

Average Land Area : 240 m²

Number of Rooms: 2

GROUND FLOOR

Area m ²	95
Terrace m ²	29.5



FIRST

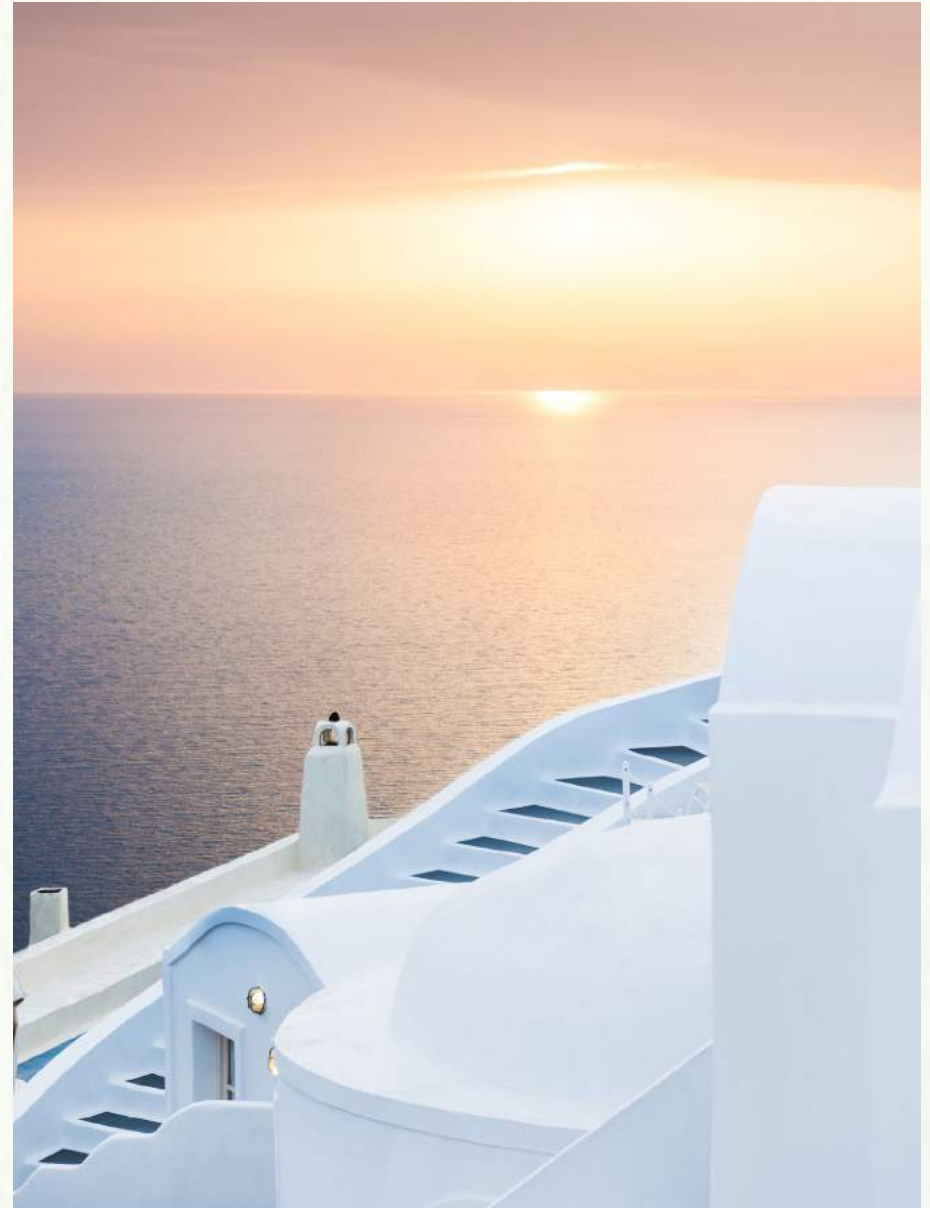
Area m ²	95
Terrace m ²	29.5



AN EARTHLY CONTEXT

Light at Bianchi Ilios beams off raw tones of earth colors characterized by:

- **A soothing ambience**
- **Warmth and belongings**
- **Chill vibes**





LUXURY IN PLAIN SIGHT:

At Bianchi Ilios, senses grow accustomed to unparalleled experiences with:

- **A five-star hotel**
- **Several eateries and food outlets**
- **An exceptional clubhouse attentive of all health and wellness needs**